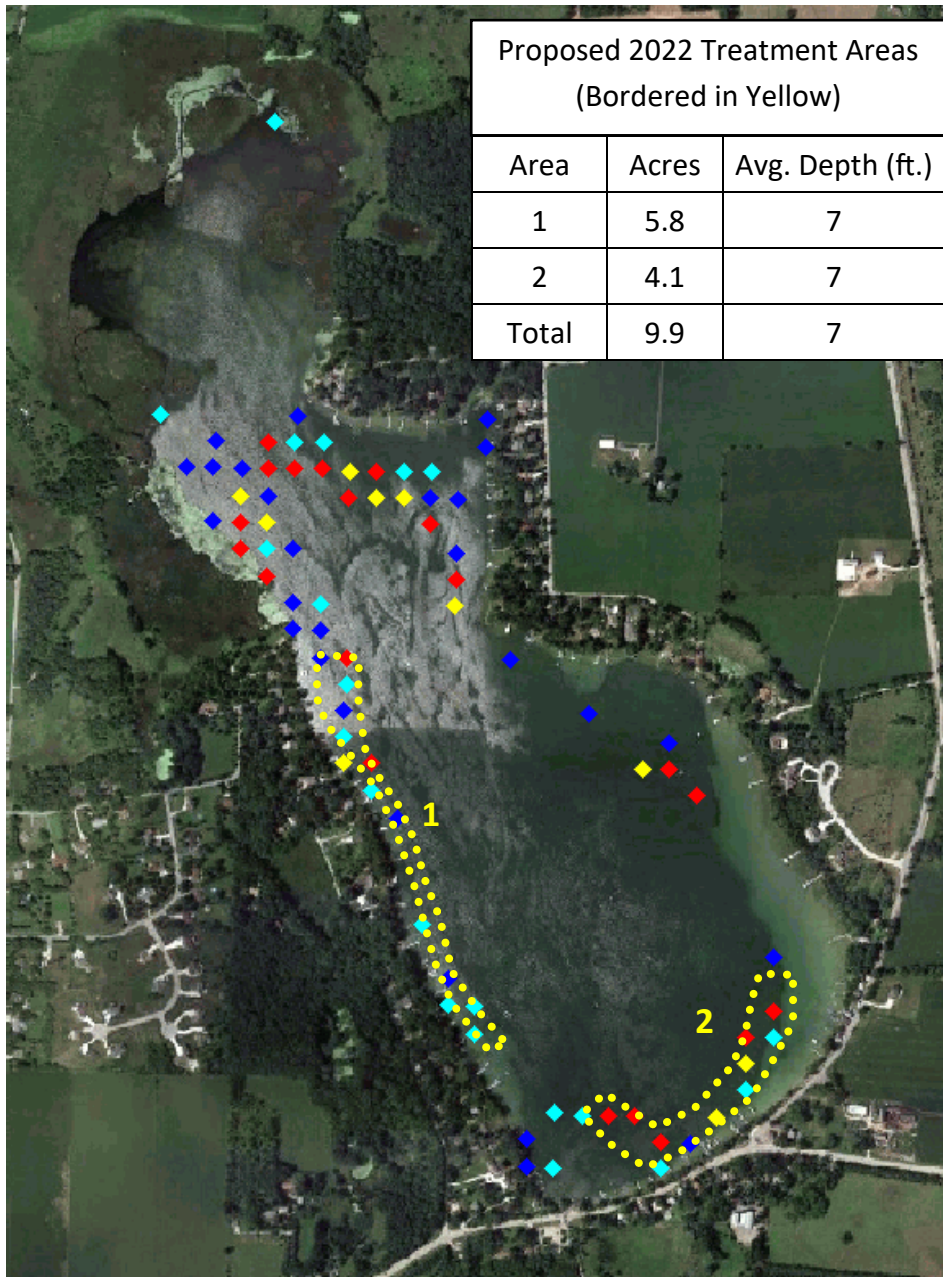


Golden Lake—Waukesha and Jefferson Counties, WI
 Point-Intercept Points with Eurasian/Hybrid Watermilfoil
 August, 2021



Key
 Blue = Rake Fullness of 1
 Red = Rake Fullness of 2
 Yellow = Rake Fullness of 3

*Note: Beds vary in width from 50 –200 ft in width