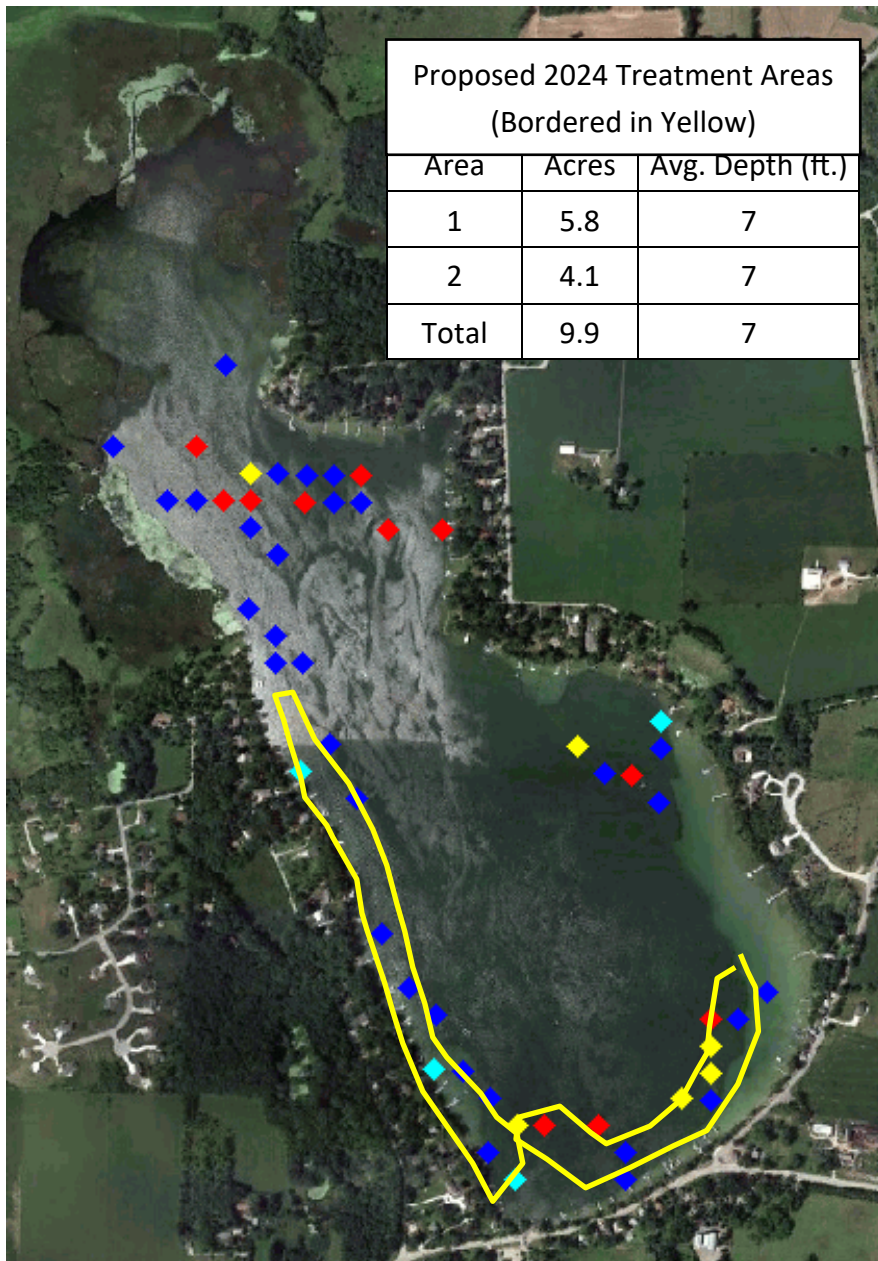


Golden Lake—Waukesha and Jefferson Counties, WI
 Point-Intercept Points with Eurasian/Hybrid Watermilfoil
 August, 2023



Key
 Blue = Rake Fullness of 1
 Red = Rake Fullness of 2
 Yellow = Rake Fullness of 3
 Aqua = Visual

*Note: Beds vary in width from 50 –200 ft in width

Solitude Lake Management
 N173W21440 Northwest Passage
 Jackson, WI 53037
 (262) 674-1783
www.solitudelakes.com