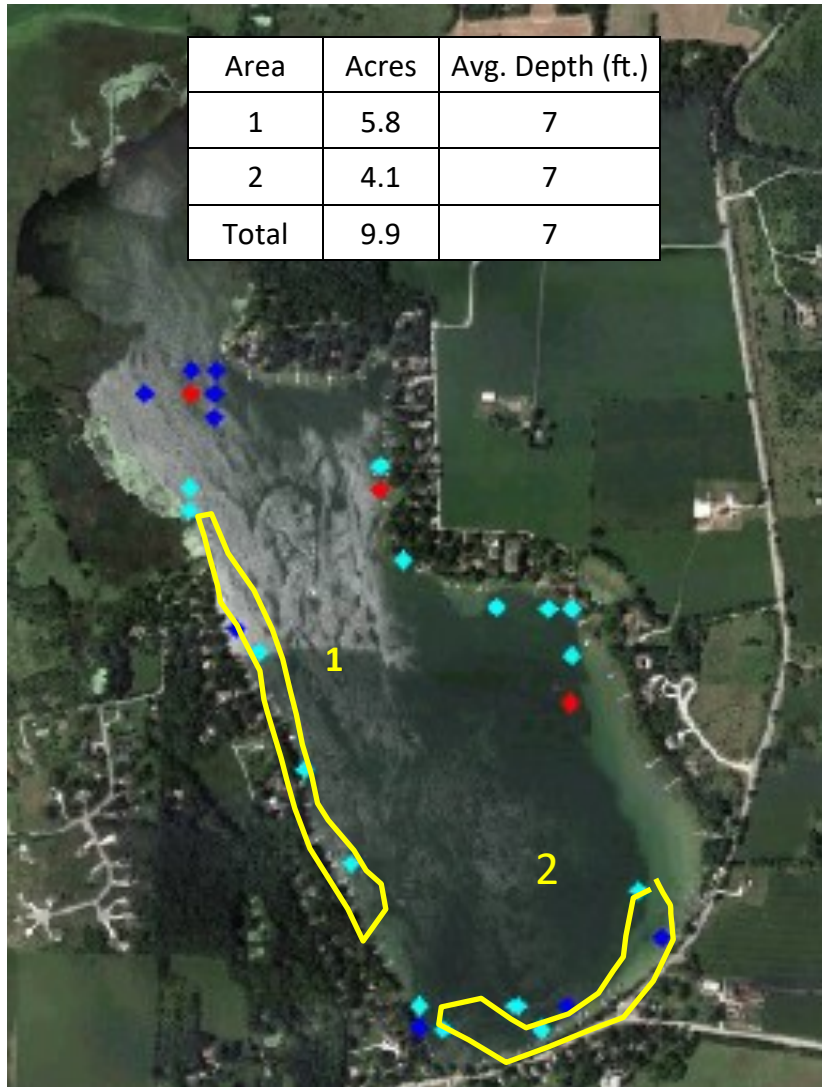


Golden Lake—Waukesha and Jefferson Counties, WI  
Point-Intercept Points with Eurasian/Hybrid Watermilfoil  
August, 2024

Proposed 2025 Treatment Areas  
(Bordered in Yellow)



Key

Blue = Rake Fullness of 1

Red = Rake Fullness of 2

Yellow = Rake Fullness of 3

Aqua = Visual

\*Note: Beds vary in  
width from 50 –200 ft  
in width